

The Flowers Of Edinburgh

Musical score for 'The Flowers Of Edinburgh' (first version). It consists of four staves of music in 4/4 time, key of D major. The first staff begins with a repeat sign. The second staff ends with a repeat sign. The third staff begins with a repeat sign. The fourth staff ends with a repeat sign. The label 'TS' is centered below the fourth staff.

Rhythm: barndance

The Flowers Of Edinburgh

Musical score for 'The Flowers Of Edinburgh' (second version). It consists of four staves of music in 4/4 time, key of D major. The first staff has a triplet of eighth notes marked with a '3'. The second staff has two first endings marked with '1' and '2'. The third staff begins with a repeat sign. The fourth staff has two first endings marked with '1' and '2'. The label 'TS' is centered below the fourth staff.

Rhythm: barndance

The Flowers Of Edinburgh

TS

Rhythm: reel

The Flowers of Edinburgh

(English)

Bacon (MDT) via TS

Rhythm: Reel

Flowers of Edinburgh

William Preece.

TS

Rhythm: hornpipe

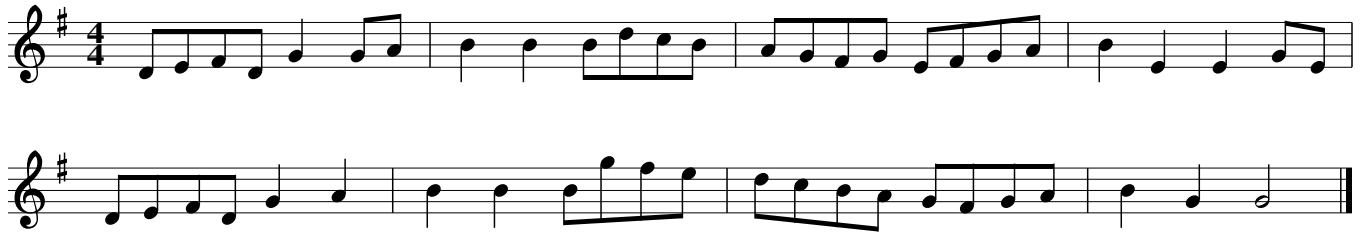
Used as tune for Red Stags Morris dance "Weobley Hankie Dance"

The Flowers of Edinburgh Jig

Knuckle Down

(English)

A



B



C



Bacon (RD from Arnold Woodley) via TS

Rhythm: Reel

Flowers of Edinburgh

Musical score for 'Flowers of Edinburgh' in 4/4 time, reel rhythm. The score consists of four staves of music. The first two staves are the melody, and the last two are the accompaniment. The key signature is one sharp (F#). The piece ends with a double bar line and repeat dots. A 'TS' (Tritone Shift) is indicated below the fourth staff.

Rhythm: reel

Flowers of Edinburgh

Musical score for 'Flowers of Edinburgh' in 4/4 time, country dance rhythm. The score consists of four staves of music. The first two staves are the melody, and the last two are the accompaniment. The key signature is one sharp (F#). The piece ends with a double bar line and repeat dots. A 'TS' (Tritone Shift) is indicated below the fourth staff.

Rhythm: Country Dance

Flowers of Edinburgh

♩ = 160

Musical score for 'Flowers of Edinburgh' in G major, 4/4 time. The score consists of four staves. The first staff begins with a repeat sign and a triplet of eighth notes. The second staff ends with a repeat sign. The third staff begins with a triplet of eighth notes. The fourth staff ends with a repeat sign. The tempo is marked as ♩ = 160. The text 'TS' is centered below the fourth staff.

The Flowers of Edinburgh

Musical score for 'The Flowers of Edinburgh' in G major, 4/4 time. The score consists of four staves. The first staff begins with a repeat sign. The second staff ends with a repeat sign. The third staff begins with a repeat sign. The fourth staff ends with a repeat sign.

"McGibbon's Scots Tunes, book II", page 59, 1746 via TS

Notes: "Slow"

Flower of Edinburgh

♩ = 60

Musical score for "Flower of Edinburgh" in G major, 4/4 time. The score consists of four staves. The first staff begins with a treble clef, a key signature of one sharp (F#), and a 4/4 time signature. It contains a melody with a triplet of eighth notes in the first measure. The second staff continues the melody with another triplet. The third and fourth staves provide a harmonic accompaniment with a steady eighth-note bass line and a more active treble line.

"John Johnson's Twelve Country Dances for the Harpsichord", 1749. via TS

Flowers of Edinburgh

Musical score for "Flowers of Edinburgh" in G major, 4/4 time. The score consists of four staves. The first staff begins with a treble clef, a key signature of one sharp (F#), and a 4/4 time signature. It contains a melody with a repeat sign at the beginning. The second staff continues the melody with a triplet. The third and fourth staves provide a harmonic accompaniment with a steady eighth-note bass line and a more active treble line, featuring several triplet figures.

"Henry Livingston's manuscript copybook", late 1700s via TS

Flowers of Edinburgh

FC

Rhythm: Country Dance

Flowers of Edinburg

Bruce Molskey via FC

Rhythm: Old-time

Transcription: M. Reid 27-Jan-1999

Flower of Edinburgh

♩ = 60

Musical score for 'Flower of Edinburgh' in G major, 3/4 time. The score consists of three staves. The first staff contains the melody with two triplet markings. The second staff contains a complex accompaniment with many sixteenth notes. The third staff contains a simpler accompaniment with dotted rhythms and rests.

Twelve Country Dances for the Harpsichord, 1749. via FC

Transcription: Transcribed by Bruce Olson

Flowers of Edinburgh

♩ = 60

Musical score for 'Flowers of Edinburgh' in F major, 3/4 time. The score consists of three staves. The first staff contains the melody with several accents. The second staff contains a complex accompaniment with many sixteenth notes. The third staff contains a simpler accompaniment with dotted rhythms and rests.

Scots Musical Museum, #13 (1787) via FC

Transcription: Transcribed by Bruce Olson

Flowers of Edinburgh

Musical score for "Flowers of Edinburgh" in 2/4 time, G major. The score consists of four staves. The first two staves are the melody, and the last two are a bass line. The piece ends with a double bar line and repeat dots.

from "The Ceilidh Album" (?) via FC

Notes: An English morris version?

Transcription: Transcribed by Nigel Gatherer

The Flowers of Edinburgh

Musical score for "The Flowers of Edinburgh" in common time, G major. The score consists of four staves. The first two staves are the melody, and the last two are a bass line. Trills (tr) are indicated above several notes. The piece ends with a double bar line and repeat dots.

McGibbon – Scots Tunes, book II, pg. 59 (c. 1746) via FC

Rhythm: Air

Notes: "Slow"

Transcription: AK/Fiddler's Companion

Flowers of Edinburgh

Musical notation for 'Flowers of Edinburgh' in treble clef, key of D major, common time. The piece consists of three staves. The first staff contains the main melody. The second and third staves provide accompaniment, featuring triplets and trills (tr). The piece concludes with a double bar line.

Henry Livingston's manuscript copybook, late 18th century via FC

Rhythm: Reel

Transcription: AK/Fiddler's Companion

Athole Flowers of Edinburgh

A

Musical notation for 'Athole Flowers of Edinburgh' section A in treble clef, key of D major, 4/4 time. The notation includes guitar chords: G, G, Am, Am, D7, G, C, Em, D7, G. The piece concludes with a double bar line.

B

Musical notation for 'Athole Flowers of Edinburgh' section B in treble clef, key of D major, 4/4 time. The notation includes guitar chords: G, D, Em, B7, Em, D7, G, C, G, Em, D7, G. The piece concludes with a double bar line.

Athole p 144, via EF

the Flowers of Edinburgh #2

Musical notation for 'the Flowers of Edinburgh #2'. The piece is in G major and 4/4 time. It consists of two staves of music. The first staff begins with a G chord, followed by a (C(C)) chord, and then a G chord. The melody features a series of eighth and sixteenth notes. The second staff continues the melody with chords Em, D, Em, G, C, G, and D7. The piece concludes with a double bar line and repeat dots.

Rhythm: reel

Transcription: John Chambers <jc:trillian.mit.edu>

Flowers of Edinburgh

Musical notation for 'Flowers of Edinburgh'. The piece is in G major and 4/4 time. It consists of six staves of music. The first staff begins with a G chord, followed by G, Em, D, D, C, and G. The second staff continues the melody with chords G, C, G, D, G, G, and D. The third staff continues the melody with chords Em, Em, G, C, G, and D. The piece concludes with a double bar line and repeat dots.

Rhythm: Reel

Flowers of Edinburgh

Musical score for 'Flowers of Edinburgh' (first version) in G major, 4/4 time. The score consists of four staves of music. The first staff begins with a repeat sign and a double bar line. Chords are indicated above the notes: G, D, and Em. The second staff continues the melody with chords G, C, G, D, and G. The third staff has a repeat sign and chords G, D, C, and Em. The fourth staff concludes with chords G, C, G, D, and G.

Flowers of Edinburgh

AABBAABB

(Trad. Scottish – FF Version, Arr. by Sunita Staneslow)

Musical score for 'Flowers of Edinburgh' (second version) in G major, 4/4 time. The score consists of four staves of music. The first staff begins with a repeat sign and a double bar line. Chords are indicated above the notes: G and Em. The second staff continues the melody with chords G and D. The third staff has a repeat sign and chords D, C, G, G, and C. A triplet of eighth notes is marked with a '3' below the first note. The fourth staff concludes with a D7 chord.

Rhythm: Reel